



SECURITY ON WHEELS
SMART MOBILE TRANSPORTATION
SOLUTION

 smart solution **2.0**

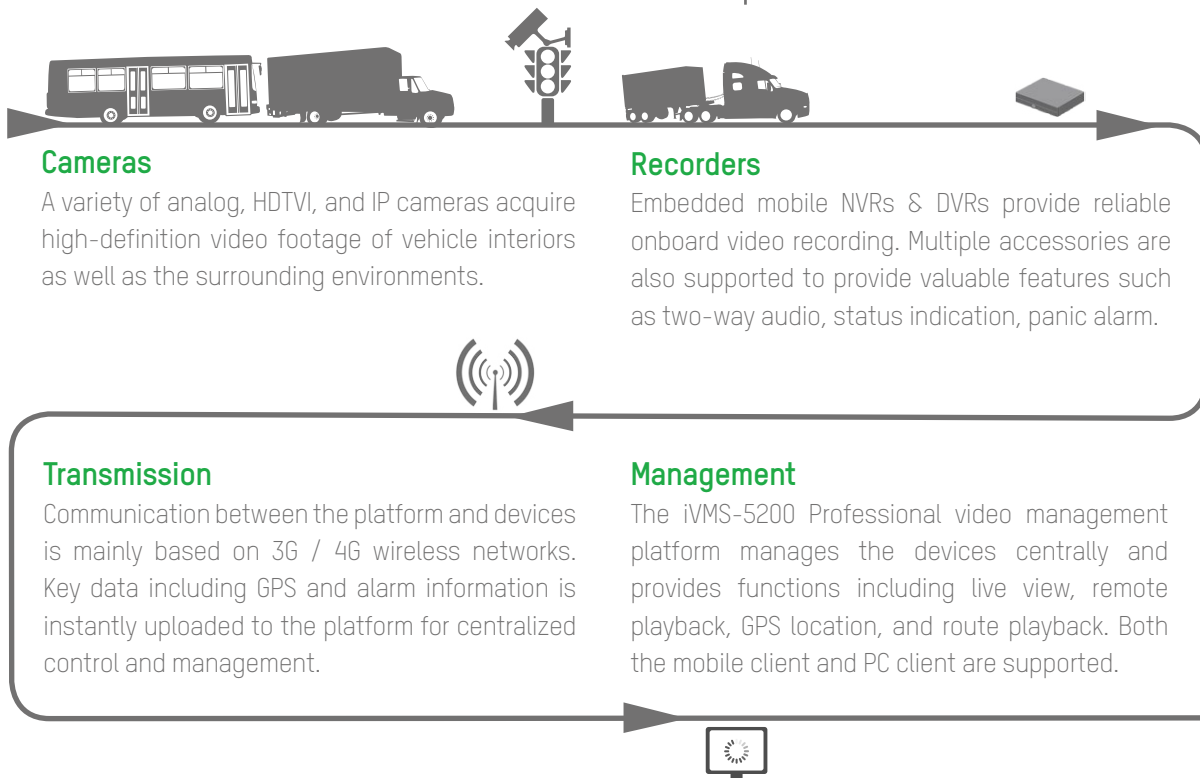


The Specialist HIKVISION Distributor



Safe public transportation is a worldwide concern, especially responding quickly to traffic accidents and guarding against potential terrorist attacks on transportation facilities. In addition, increased passenger loads and more complex transportation hubs call for a central management system to safeguard against unlawful activities such as pickpocketing, disorderly behavior, and so on.

Hikvision Smart Mobile Transportation Solution



■ Mobile HD Video Monitoring

Comprehensive high-definition video monitoring helps authorities to deal with situations such as pickpocketing, traffic accidents, terrorism, disorderly behavior of passengers and drivers, and more. Pictures and videos can be exported to law enforcement for investigation.



Supervising driver's behavior



Monitoring entrance with intrusion detection



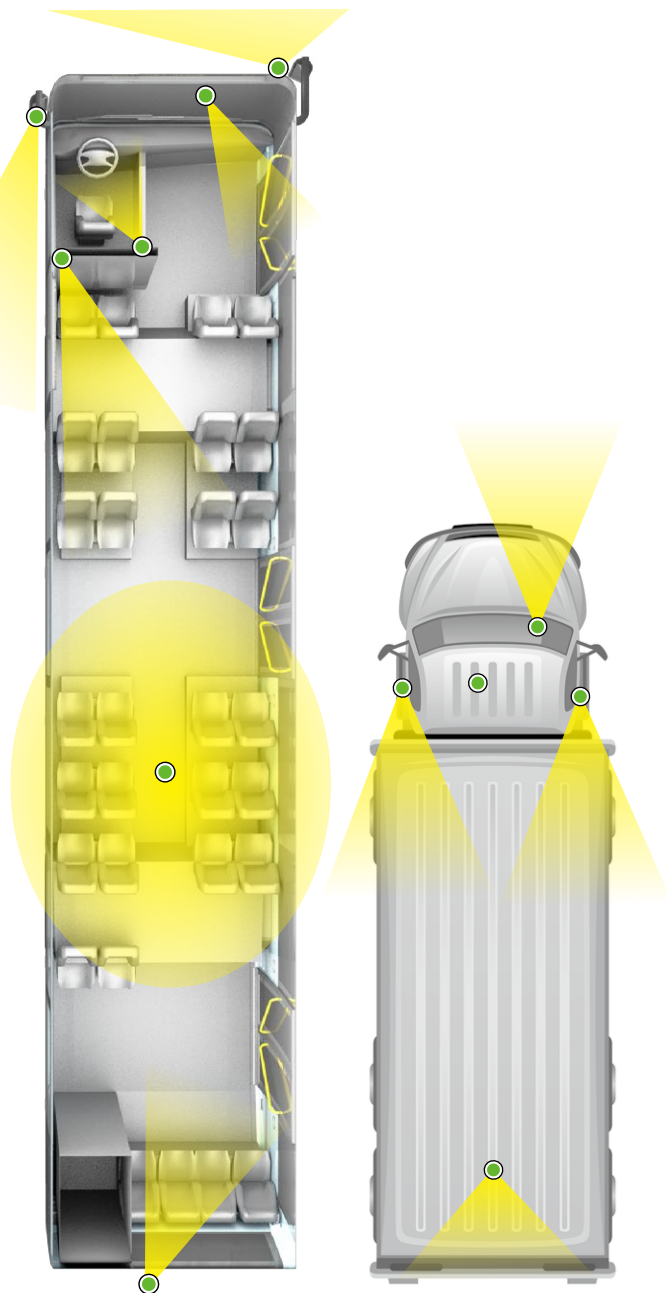
Viewing vehicle passengers from different angles



Monitoring traffic outside of the vehicle



Dedicated fisheye camera and on-board recorder with LCD monitor offer side view to prevent dead-angle on backing a vehicle.



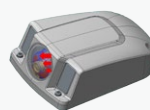
MOBILE

Rich Mobile-Dedicated Products to Satisfy Every Transport Requirement



Up to 1920x1080 resolution with mobile IP products

NETWORK



Special heating module and defog for outer-vehicle cameras



- High-reliability storage with die-cast aluminum design
 - Fully enclosed with dual-protected HDD and patented aviation airbag
 - Reinforced camera materials parts with silicone pad for shock absorption
 - Support multiple specialized connectors for vehicles or trail transport.
- * Customization may required.



Dual-card design and zero channel combine to optimize wireless transmission



- Wide range isolated power supply to adapt sudden power voltage change;
- Support low battery voltage detection;
- Using super capacitor to ensure normal shutdown;
- Overvoltage protection against shocks (pulse filtering)

HDTVI



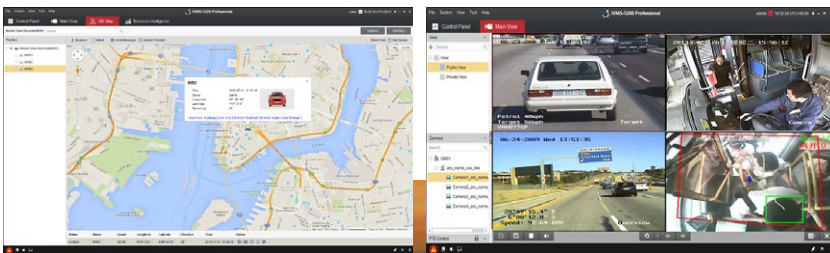
ANALOG





Real-time Tracking

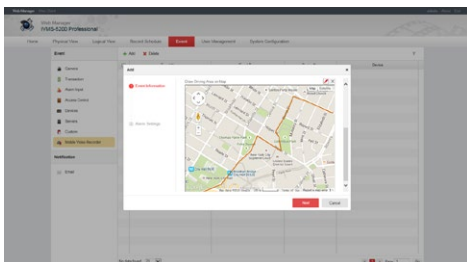
Tracking in real time helps authorities inspect onboard situations.



MOBILE

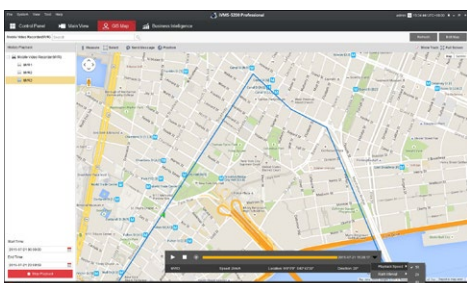
Exception Alarms

Smart features such as fence crossing alarms and deviation alarms can help authorities take effective action to handle security events.



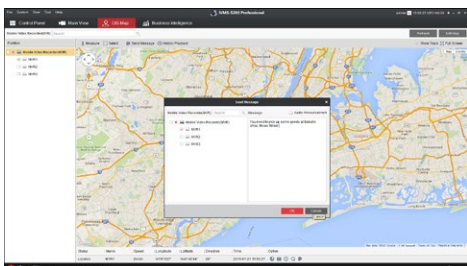
Routine Playback

This tool enables authorities to evaluate each vehicle's efficiency.



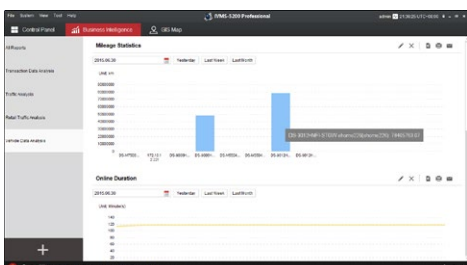
Instant Messaging

This function allows the security center to communicate directly with the vehicle.



Analytic Reporting

Reports on vehicle mileage, traffic, and timing provide intelligence that helps authorities make smart decisions to enhance revenue.



DS-2CD6510D-I(O)/6520D-I(O)

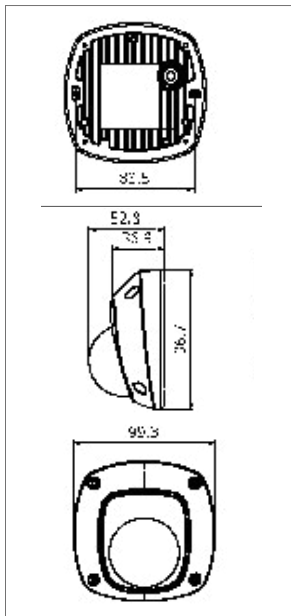
1.3/2MP 1/3" CMOS Mini Dome



Key Features

- 1.3/2MP resolution
- Up to 10m IR range
- Reinforcing design
- Vibration-proof
- EN50155 certification
- Various connectors
- Rotate mode

Dimension (unit: mm)



Order Models

DS-2CD6510D-I(O)
 DS-2CD6520D-I(O)
 DS-2CD6510D-I
 DS-2CD6520D-I

	DS-2CD6510D-I(O)	DS-2CD6520D-I(O)
Camera		
Image Sensor	1/3" Progressive Scan CMOS	
Min. Illumination	0.01Lux @(F1.2,AGC ON) , 0 Lux with IR 0.028Lux @(F2.0,AGC ON) ,0 Lux with IR	0.01 Lux @(F1.2,AGC ON), 0 Lux with IR
Shutter Speed	1/25 s to 1/100,000 s	1/3s-1/100,000s
Lens	4mm, angle of view: 73.1° (2.8mm/6mm lens optional)	4mm, angle of view: 63° (2.8mm/6mm lens optional)
Lens Mount	M12	
Day & Night	ICR	
DNR	3D Digital Noise Reduction	
Angle of adjustment	Pan: -30°-30°, Tilt: 0-80°, Rotation: 0-360°	
WDR	Digital WDR	
Compression		
Video Compression	H.264 / MJPEG	
H.264 Type	Baseline Profile / Main Profile / High Profile	
Video Bit Rate	32 Kbps - 8Mbps	
Audio Compression	G.711/G.722.1/G.726/MP2L2	
Audio Bit Rate	64Kbps(G.711) / 16Kbps(G.722.1) / 16Kbps(G.726) / 32-128Kbps(MP2L2)	
Image		
Max. Resolution	1280 × 960	1920 × 1080
Frame Rate	50Hz: 25fps (1280 × 960), 25fps (1280 × 720), 60Hz: 30fps (1280 × 960), 30fps (1280 × 720)	50Hz: 25fps (1920*1080,1280 × 960,1280 × 720) 60Hz: 30fps (1920*1080,1280 × 960,1280 × 720)
Image Setting	Rotate mode, Saturation, Brightness, Contrast and sharpness are adjustable by client software or web browser	
Backlight compensation	zone optional	
ROI	Support	
Network		
Network Storage	64G Micro SD/SDHC/SDXC card slot, NAS (Support NFS,SMB/CIFS)	
Alarm Trigger	Motion detection, Dynamic Analysis, Tampering alarm, Network disconnect, IP address conflict, Storage full, storage error	
Protocols	TCP/IP,ICMP,HTTP,HTTPS,FTP,DHCP,DNS,DDNS,RTP,RTSP,RTCP,PPPoE,NTP,UPnP,SMTP,SNMP,IGMP,802.1X,QoS,IPv6,Bonjour	
Video Output	ONVIF,PSIA,CGI,ISAPI	
Audio Input	Flickerless , dual stream, heartbeat, mirror, password protection, video cover, watermark	
Interface		
Communication	-I0 model : 1x RJ45 10M/100M Ethernet interface -I1 model : 1x M12 10M/100M Ethernet interface	
Video	1 Vp-p composite output (75 Ω/BNC)	
Audio	1 built-in mic	
General		
Operating Conditions	-30 °C - 60 °C Humidity 95% or less (non-condensing)	
Power Supply	DC12V±10% / PoE(802.3af)	
Power Consumption	5W MAX	5.5W MAX
IR Range	10 m	
Ingress Protection	IP66	
Impact Protection	IK08	
Dimensions (mm)	99.3×96.7×52.8	
Weight	600 g (1.32 lbs)	

MOBILE

DS-2CD6510ET-IO/6510ET-IO

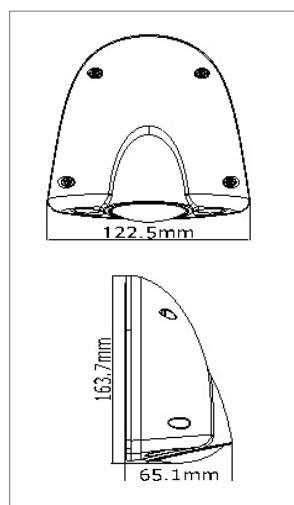
1.3/2MP Outer-vehicle Network Camera



Key Features

- 1.3/2MP resolution
- Up to 30m IR range
- 3-axis adjustment
- IP68 protection
- Heater and defog
- Vandal-proof housing
- Aviation connector
- -IO: RJ45 connector
- EN50155 certification

Dimension (unit: mm)



Order Models

DS-2CD6510ET-IO
DS-2CD6520ET-IO

	DS-2CD6510ET-IO	DS-2CD6520ET-IO
Camera		
Image Sensor	1/3" Progressive Scan CMOS	
Min. Illumination	0.01Lux @(F1.2,AGC ON) ,0 Lux with IR 0.028Lux @(F2.0,AGC ON) ,0 Lux with IR	
Shutter Speed	1/3 s to 1/100,000 s	
Lens	6mm@F2.0 Angle of view: 46°	
Lens Mount	M12	
Day & Night	IR cut filter with auto switch	
DNR	3D Digital Noise Reduction	
Angle of adjustment	Pan: -15°-15°, Tilt: 0-30°, Rotation: -90°-90°	
WDR	Digital WDR	
Compression Standard		
Video Compression	H.264 / MJPEG	
H.264 Type	Baseline Profile / Main Profile / High Profile	
Video Bit Rate	32 Kbps – 8Mbps	
Image		
Max. Resolution	1280 × 960	1920 × 1080
Frame Rate	50Hz: 25fps (1280 × 960), 25fps (1280 × 720) 60Hz: 30fps (1280 × 960), 30fps (1280 × 720)	50Hz: 25fps (1920 × 1080), 25fps (1280 × 960), 25fps (1280 × 720) 60Hz: 30fps (1920 × 1080), 30fps (1280 × 960), 30fps (1280 × 720)
Image Setting	Rotate mode, Saturation, Brightness, Contrast and sharpness are adjustable by client software or web browser	
BLC	Yes, zone optional	
ROI	Support	
Network		
Network Storage	NAS (Support NFS,SMB/CIFS)	
Alarm Trigger	Motion detection, Dynamic Analysis, Tampering alarm, Network disconnect, IP address conflict	
Protocols	TCP/IP,ICMP,HTTP,HTTPS,FTP,DHCP,DNS,DDNS,RTP,RTSP,RTCP,PPPoE,NTP,UPnP,SMTP,SNMP,IGMP,802.1X,QoS,IPv6,Bonjour	
Standard	ONVIF,PSIA,CGI,ISAPI	
General function	Flash-prevention, dual stream, heartbeat, mirror, password protection, video cover, watermark	
Interface		
Communication	1-ch M12 10M / 100M self-adaptive Ethernet port	1 RJ45 10M/100M Ethernet interface
Audio Input / Output	1 audio input / 1 audio output (4 Pin Plug)	1Vp-p composite output (75 Ω/BNC)
General		
Operating Conditions	-40 °C – 70 °C Humidity 95% or less (non-condensing)	
Power Supply	DC12V±10% / PoE(802.3af)	
Power Consumption	9W MAX	
IR Range	30 m	
Impact Protection	IK10	
Ingress protection	IP68	
Dimensions (mm)	163.7 × 122.5 × 65.1	
Weight	900 g (1.98 lbs)	



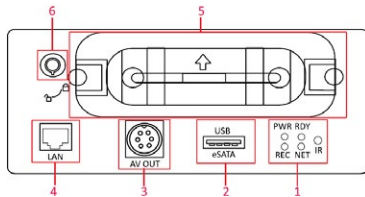
DS-M7508HNI

8-ch Mobile Network Video Recorder

Key Features

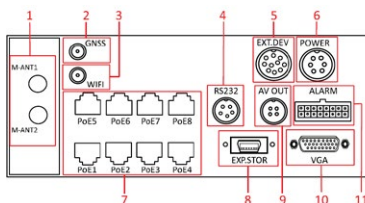
- Supports 8 channels of 1080P IP video input
- 8-channel POE interface
- Pluggable disk box with vibration damping technology
- Two 2.5-inch SATA HDDs / SSDs
- External storage expansion supported
- Pluggable 3G/4G model (optional)
- Built-in Wi-Fi/GPS (optional),
- Built-in G-sensor
- EN 50155 certification

Front Panel of DS-M7508HNI



1. Indicators
2. AV OUT
3. USB / eSATA
4. LAN
5. Hard disk lock
6. Hard disk box

Rear Panel of DS-M7508HNI



1. M-ANT1;M-ANT2
2. GNSS
3. Wi-Fi(optional)
4. RS232
5. EXT.DEV
6. POWER
7. PoE1-POE8
8. EXP. STOR(reserved)
9. AV OUT
10. VGA
11. ALARM

Order Models

- DS-M7508HNI
- DS-M7508HNI/GW *3G
- DS-M7508HNI/GW/WI *3G + Wi-Fi

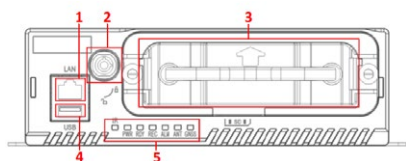
Video/Audio input	
Analog video input	None
IP video input	8-ch, PoE supported
Two-way audio	1-ch, G.722
Incoming bandwidth	160Mbps
Video/Audio output	
Recording resolution	1080P / 720P
VGA output	1-ch Resolution: 1920×1080 / 60Hz, 1280×1024 / 60Hz, 1280×720 / 60Hz, 1024×768 / 60Hz
CVBS output	3-ch Aviation plug (1.0 Vp-p, 75 Ω); resolution: PAL: 704 × 576, NTSC: 704 × 480
Audio output	3-ch Aviation plug (linear level,600 Ω)
Decoding	
Live view	8-ch
Synchronous playback	1-ch
Hard disk	
Type	Two 2.5-inch SATA HDDs / SSDs, external storage expansion supported (reserved) Note: If two HDDs / SSDs are installed, the disk size should be of 7mm.
Capacity	Up to 2*1TB capacity supported
Installation	Pluggable
Protection	3-generation hard disk box
Backup	Hard disk box, USB interface and eSATA interface supporting data backup
Wireless Network	
Dialing	3G (WCDMA), dual SIM card mode reserved
Wi-Fi (optional)	802.11 b/g/n supported, 2.4GHz
Positioning	
GNSS	GPS
External interface	
Alarm in	7-ch high/low level signal input; 1-ch pulse signal input; 3mm connector
Alarm out	2-ch; 3mm connector
Network interface	1; RJ45; 10M/100M self-adaptive Ethernet interface
PoE	8; RJ45
Antenna interface	SMA interfaces: two for 3G (one for reserved), one for Wi-Fi (optional) and one for GPS
Serial interface	RS-232, RS-422, aviation plug
eSATA interface	1
USB interface	1 × USB2.0
EXP.STOR	Connectable to external HDD for storage expansion (reserved)
SIM card	2, standard SIM card slots (one for reserved)
General	
Operating system	Linux
Operating method	IR remote control
Power supply	Input: +8- +36VDC; Output: 12VDC/2A, 5VDC/1A
Consumption	Standby: Max. 0.5W; Full load: Max.20W (without IP camera or hard disk)
Working temperature	-10 °C ~ +55 °C (14 °F ~ 131 °F)
Working humidity	10%-90%
Dimensions (W×D×H)	245.8mm×202mm×86.87mm
Weight	Aprox.3.3kg (without hard disk)



Key Features

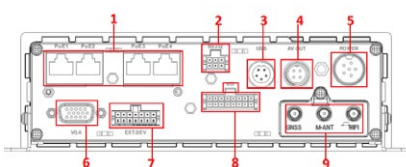
- Supports 4 channels of 1080P IP video input
- 4-channel POE interface
- Pluggable disk box with vibration damping technology
- 2x pluggable 2.5-inch HDDs / SSDs
- 1x SD/SDHC card slot
- Pluggable 3G/4G/Wi-Fi module (optional)
- Standard 1DIN dimensions
- EN50155 certification

Front Panel of DS-M5504HNI



- 1. LAN
- 2. Hard disk lock
- 3. Hard disk box
- 4. USB
- 5. Indicators

Rear Panel of DS-M5504HNI



- 1. PoE1 to PoE4
- 2. RS232
- 3. USB
- 4. AV OUT
- 5. POWER
- 6. VGA
- 7. EXT. DEV
- 8. I/O
- 9. GNSS
- 10. M-ANT
- 11. Wi-Fi

Order Models

- DS-M5504HNI
- DS-M5504HNI/GW * 3G
- DS-M5504HNI/GW/WI * 3G + Wi-Fi

DS-M5504HNI

4-ch Mobile Network Video Recorder

	DS-M5504HNI	DS-M5504HNI/GW	DS-M5504HNI/GW/WI
Video/Audio input			
IP video input	4-ch		
IP audio input	4-ch		
Video/Audio output			
VGA output interface	1-ch VGA interface		
VGA output resolution	1920 × 1080/60Hz, 1280 × 1024/60Hz, 1280 × 720/60Hz, 1024 × 768/60Hz		
CVBS output resolution	PAL: 704 × 576, NTSC: 704 × 480		
CVBS output interface	1-ch aviation plug (1.0 Vp-p, 75 Ω) 1-ch RS-422 interface (EXT.DEV interface)		
Video/Audio Decoding			
Video compression	H.264		
Audio compression	G.711		
Resolution	1080p and 720p		
Frame rate	25 fps (PAL)/30 (NTSC)		
Playback	Local playback: single channel playback; Web playback: single channel playback and multi-channel synchronous playback.		
Hard disk			
Hard disk	Hard disk		
Wireless Network			
3G Dialing	Not supported	1 external antenna	
Wi-Fi	Not supported	1 external antenna	
Positioning			
GNSS interface	GPS and optional BDS (BeiDou Navigation Satellite System). 1 positioning antenna.		
External interface			
Sensor-in	4 high/low level signal inputs; 1 pulse signal input (reserved)		
Alarm input	3 high/low level signal inputs		
Alarm output	2 relay signal outputs		
Network interface	1 RJ45 10M/100M self-adaptive Ethernet interface.		
Serial interface	1 RS-232 interface. 1 RS-422 interface, including reserved auto announcer interface.		
USB interface	2 USB2.0 interfaces.		
POE supported	4 RJ45 10M/100M self-adaptive PoE interfaces.		
Two-way audio	1-ch, G. 722		
General			
Operating system	Embedded Linux operation system		
Operating method	Local operation, IR remote control, Web operation		
Power supply	Input: +8 to +36 VDC; Output: +12 VDC/2 A, +5 VDC/1 A		
Consumption	Standby: Max. 0.5W; Full load: Max.20W (without IP cameras or hard disks)		
Working temperature	- 20° C to + 60° C [- 4° F to + 140° F] with industrial-class HDD. Note: for enterprise-class HDD, when the temperature < 0° C, the heater for hard disk is needed.		
Working humidity	10% to 95%		
Dimensions (W×D×H)	1 DIN: 178 mm × 170 mm × 50 mm (7.01" × 6.69" × 1.97")		
Weight (without hard disks)	< 1.6 kg (3.53 lb)		

DS-M5504HMI

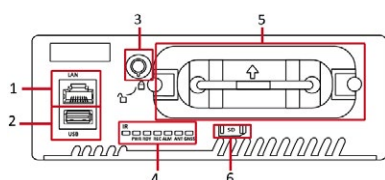
4-ch Mobile Analog Video Recorder



Key Features

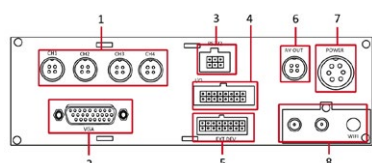
- Supports 4 channels of WD1 video input
- Pluggable disk box with vibration damping technology
- 1x 2.5-inch HDD/SSD
- Pluggable 3G/4G/Wi-Fi module (optional)
- Standard 1DIN dimensions
- EN50155 certification

Front Panel of DS-M5504HMI



1. LAN
2. USB
3. Hard disk lock
4. Indicators
5. Hard disk box
6. SD card slot

Rear Panel of DS-M5504HMI



1. CH1-CH4
2. VGA
3. RS232
4. I/O
5. EXT.DEV
6. AV OUT
7. POWER
8. Pluggable Module

Order Models

- DS-M5504HMI
 DS-M5504HMI/GW *3G
 DS-M5504HMI/GW/WI *3G + Wi-Fi

Video/Audio input	
Analog video input	4-ch Aviation plug (1.0 Vp-p, 75 Ω), PAL / NTSC self-adaptive
Audio input	4-ch Aviation plug (linear level, 1kΩ)
IP video input	None
Video/Audio output	
VGA output	1-ch Resolution: 1920×1080, 1280×1024, 1280×720, 1024×768
CVBS output	1-ch; Aviation plug (1.0 Vp-p, 75 Ω); resolution: PAL: 704 × 576, NTSC: 704 × 480
Audio output	1-ch; aviation plug (linear level, 600 Ω)
Encoding/Decoding parameters	
Video compression	H.264
Encoding resolution	Main stream: WD1 / 4CIF / 2CIF / CIF Sub stream: CIF / QCIF
Frame rate	PAL: 1-25fps; NTSC: 1-30fps
Video bitrate	32Kbps~2Mbps; custom (Max.: 4Mbps)
Audio compression	G.711
Audio bitrate	16Kbps
Stream type	Video, Video & Audio
Dual stream	Supported
Hard disk	
Type	One 2.5-inch SATA HDD/SSD
Capacity	Up to 1TB capacity supported
Installation	Pluggable
Protection	3-generation hard disk box
Backup	USB interfaces on hard disk box and device front panel supporting data backup
Wireless Network	
3G	WCDMA (2G module optional)
Wi-Fi (optional)	802.11 b/g/n supported, 2.4GHz
Positioning	
GNSS	GPS; BDS (optional)
External interface	
Two-way audio	G.722
Alarm in	7-ch high/low level signal input; 1-ch pulse signal input; 3mm connector
Alarm out	2-ch; 3mm connector
Network interface	1; RJ45; 10M/100M self-adaptive Ethernet interface
Antenna interface	SMA interfaces on pluggable module including one for 3G, one for Wi-Fi and one for GPS
Serial interface	RS-232, RS-485, 3mm connector
USB port	1 × USB2.0
SIM card	1, standard SIM card slot
SD/SDHC card	1, standard SD/SDHC card slot
General	
Operating system	Linux
Operating method	IR remote control
Power supply	Input: +8- +36VDC; Output: 12VDC/2A, 5VDC/1A
Consumption	Standby: Max. 0.5W; Full load: Max.20W (without 7-inch screen)
Working temperature	-10 °C ~ +55 °C (14 °F ~ 131 °F)
Working humidity	10%-90%
Dimensions (W×D×H)	178mm×170mm×50mm
Weight	Aprox.1.6kg (without hard disk or SD/SDHC card)

DS-2CS58C0T-IT(S)

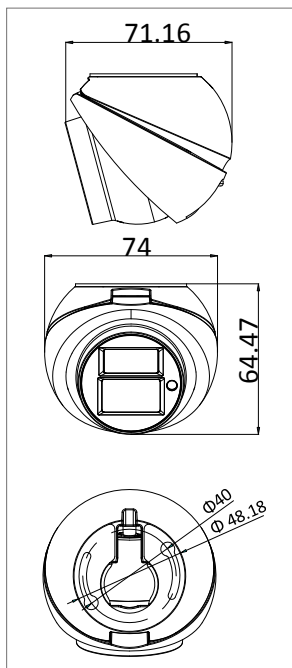
1MP HDTVI Mobile Camera



Key Features

- HD720P resolution
- Up to 20m IR range
- 2.1/2.8/3.6mm fixed lens
- Built-in microphone (-S)
- Aviation connector
- IP68 rated

Dimension (unit: mm)



Order Models

- DS-2CS58C0T-IT
- DS-2CS58C0T-ITS

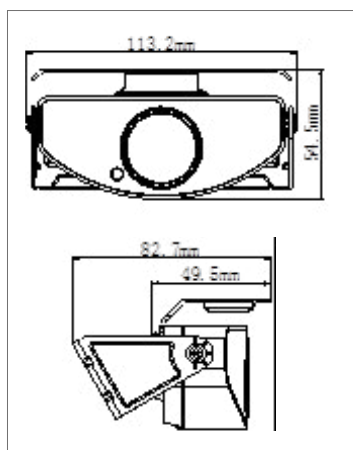
	DS-2CS58C0T-IT	DS-2CS58C0T-ITS
Camera		
Image Sensor	1.0MP Progressive Scan CMOS	
Resolution	1280(H)×800(V)	
Min. Illumination	0.1Lux @ (F1.2, AGC ON), 0 Lux with IR	
Shutter Time	1/25(30)s to 1/50,000s	
Lens	2.1mm(2.8mm/3.6mm optional)	
Lens Mount	M12	
Angle Adjustment	Pan:0° - 50°; Tilt:0° - 50°; Rotation:0° - 360°	
Day & Night	Electronic	
Horizontal Definition	950TVL	
Synchronization	Internal	
Video Output	Aviation port	
Audio Input	-	1-ch audio interface(Aviation plug)
Audio Output	-	720p@25fps/30fps
Frame Rate	720p@25fps/30fps	
Function	Mirror(PTZ control)	
General		
Working Temperature/ Humidity	-40 °C - 75 °C Humidity 90% or less (non-condensing)	
Power Supply	DC6V-16V	
Power Consumption	3.5W MAX	
IR Range	20-30m	
Protection Level	IP68	-
Dimension(mm)	74×64.47×71.16	
Weight	400g	



Key Features

- HD720P resolution
- Up to 20m IR range
- 2.1/2.8/3.6mm fixed lens
- Aviation connector
- IP68 rated

Dimension (unit: mm)



DS-2CS58C0T-ITR

1MP HDTVI Mobile Camera

Camera	
Image Sensor	1.0Mega Progressive Scan CMOS
Signal System	1280(H)×800(V)
Min. Illumination	0.1Lux @ (F1.2,AGC ON),0 Lux with IR
Shutter Time	1/25(30)s to 1/50,000s
Lens	2.1mm(2.8mm/3.6mm optional)
Lens Mount	M12
Angle Adjustment	Tilt: 90°
Day & Night	Electronic
Horizontal Definition	950TVL
Synchronization	Internal
Video Output	Aviation port
HD Video Output	1 Turbo HD output, in line with HDTVI standard
Function	Mirror(PTZ control)
Frame Rate	720p@25fps/30fps
Function	Mirror(PTZ control)
General	
Working Temperature/ Humidity	-40°C-80°C, Humidity 90% or less (non-condensing)
Power Supply	DC6V-16V
Power Consumption	3.5W MAX
IR Range	20-30m
Protection Level	IP68
Dimension(mm)	89.6×59.1
Weight	400g

Order Models

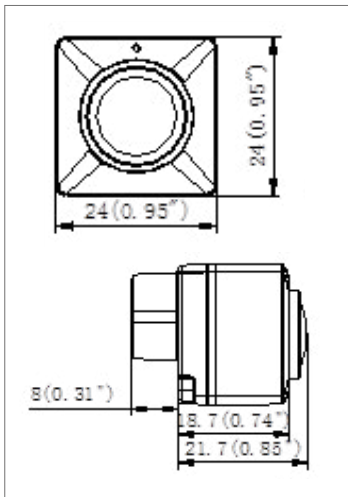
DS-2CS58C0T-ITR



Key Features

- Clear and vivid image
- 0.1Lux@(F1.4,AGCON) , 0 Lux with IR
- IP68 protection level, high reliability

Dimension (unit: mm)



DS-2CS5802P(N)-F

Analog Fisheye Mobile Camera

Camera	
Image Sensor	1/4" Progressive Scan CMOS
Signal System	PAL/NTSC
Effective Pixels	728(H)×560(V)
Min. illumination	0.1Lux@(F1.4, AGCON)
Shutter Time	1/25(1/30)-1/50,000sec
Lens	1.15mm@F2.0
	Angle of view: 120°
Lens Mount	M12
Day & Night	Color
Horizontal Resolution	480TVL
Synchronization	Internal synchronization
Video Output	1Vp-p Composite Output(75Ω/BNC, aviation plug)
S/N Ratio	>60dB
General	
Working Temperature/ Humidity	-30 °C - 70 °C (-22 °F - 158 °F) Humidity 90% or less (non-condensing)
Power Supply	6-16V DC
Power Consumption	Max. 0.5W
Ingress Protection	IP68
Dimension	24×24×29.7mm(0.94"×0.94"×1.17")
Weight	50g(0.11lb)

Order Models

DS-2CS5802P-F,
DS-2CS5802N-F



Innovative Electronic Solutions
www.ness.com.au



NSW Ph 02 8825 9222
sales@ness.com.au

VIC Ph 03 9875 6400
nessmelb@ness.com.au

QLD Ph 07 3399 4910
nessbris@ness.com.au

WA Ph 08 9328 2511
nessper@ness.com.au

SA Ph 08 8152 0000
adelaide@ness.com.au